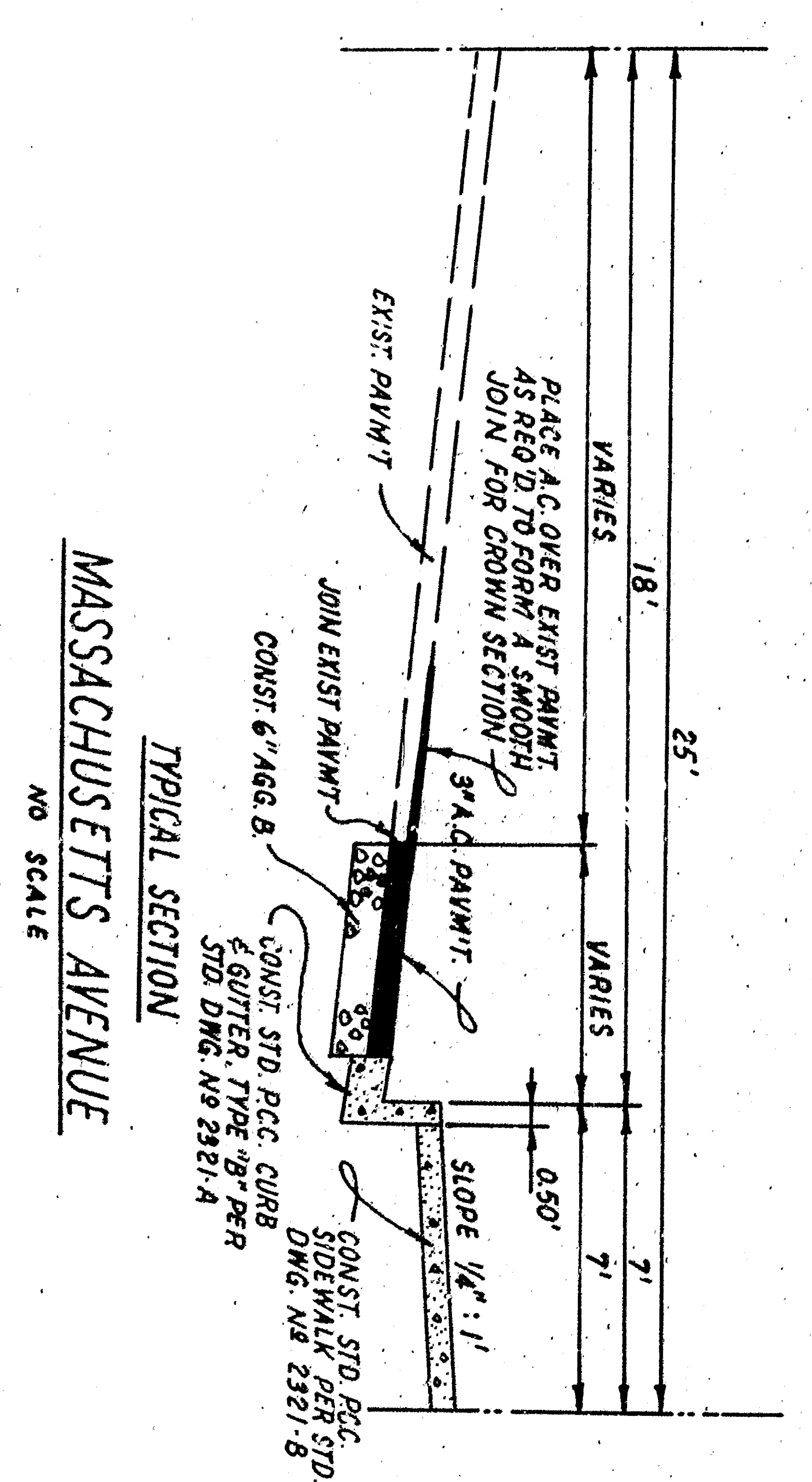


- CONSTRUCTION NOTES**
1. CONST. 4" R.C.C. SIDEWALK
 2. CONST. STD. COMM. DRIVEWAY, PER STD. 2321-A
 3. CONST. R.C.C. CURB & GUTTER, PER STD. 2321-A TYPE "B"
 4. CONST. 4.5" A.C. PAV. GRADED TO DRAIN
 5. JOIN EXIST. CONCRETE AND MATCH EXIST. ELEVATIONS.
 6. CONST. 3" A.C. OVER 6" A.B. PER TYPICAL SECTION HEREON.
 7. REMOVE EXIST. CONC. DRIVEWAYS
 8. REMOVE EXIST. CONC. SIDEWALK
 9. CONST. P.C.C. CURB PER STD. 2321-A TYPE "A", JOIN EXIST. ELEV.
 10. INSTALL 4" CI PIPE UNDER WALK AND DRIVEWAY 5'-0" MIN. TO DRAIN PROPOSED CATCH BASIN AS SHOWN ON G.S. PLAN.



GENERAL NOTES:

1. PRIVATE AND PUBLIC UTILITIES SHOWN HEREON ARE SUBJECT TO CHANGE. LOCATING ALL LINES AFFECTING THIS WORK, AND FOR DAMAGE ON PROTECTION OF THESE LINES.
2. ALL WORK EMPLOYED ON THESE PLANS SHALL BE DONE IN CONFORMANCE WITH APPLICABLE PROVISIONS OF STANDARD SPECIFICATION, THE CITY ENGINEER AND DWS NO. 5321 ON FILE IN THE OFFICE OF THE CITY ENGINEER.
3. ALL WORK ON HIGHLAND AVENUE SHALL CONFORM TO STATE DIVISION OF HIGHWAY'S STANDARD SPECIFICATION NO. 5321.

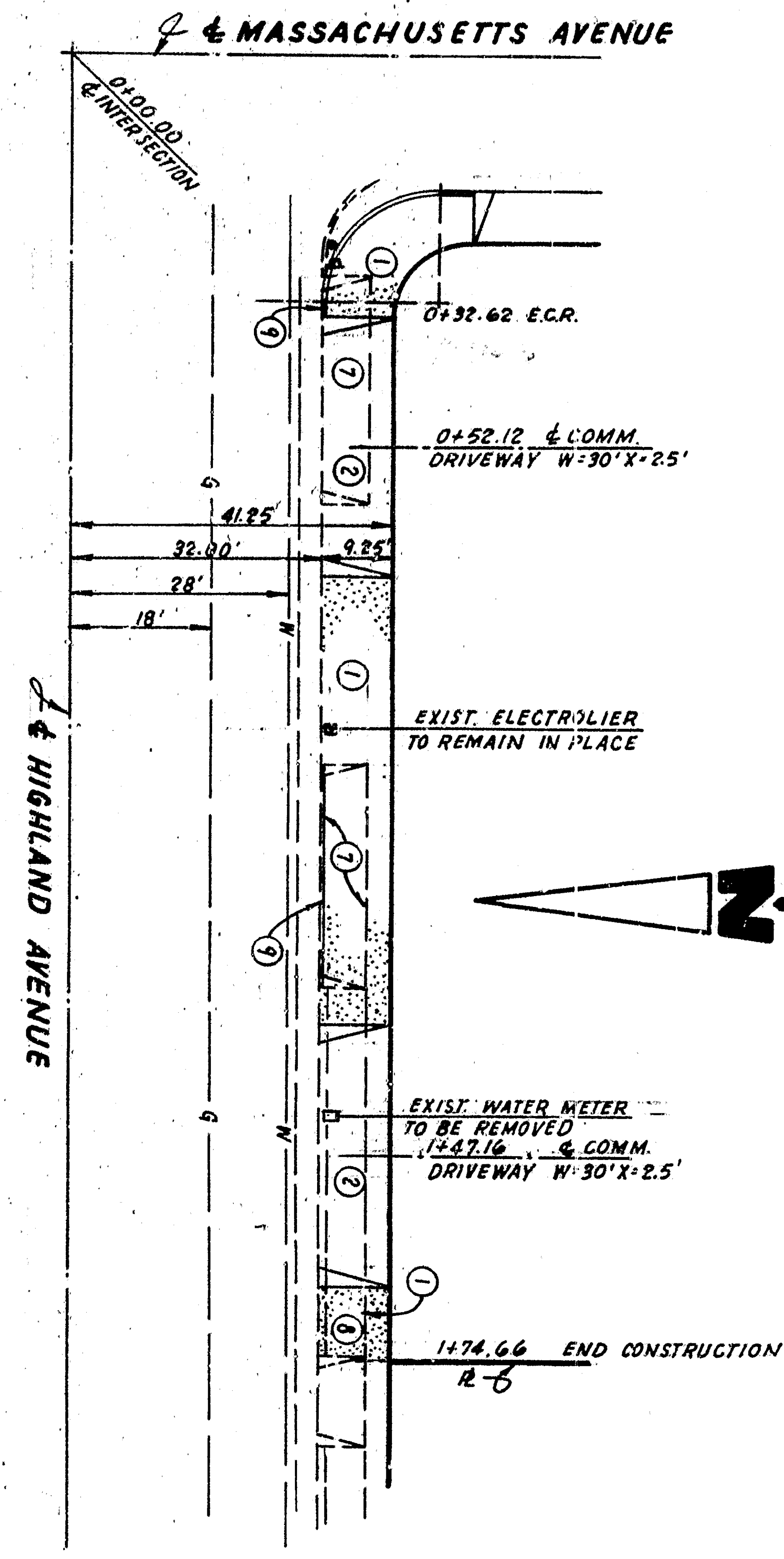
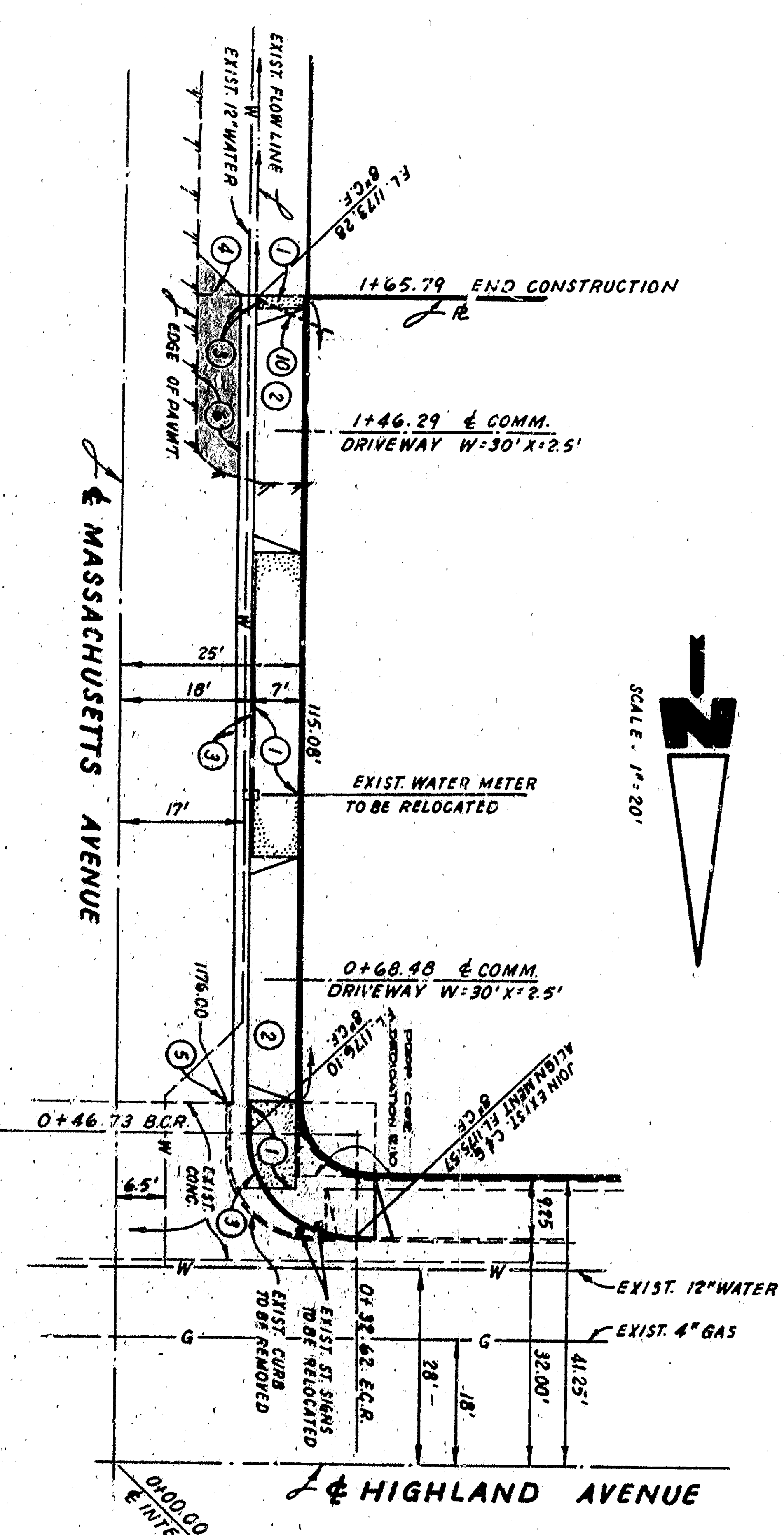
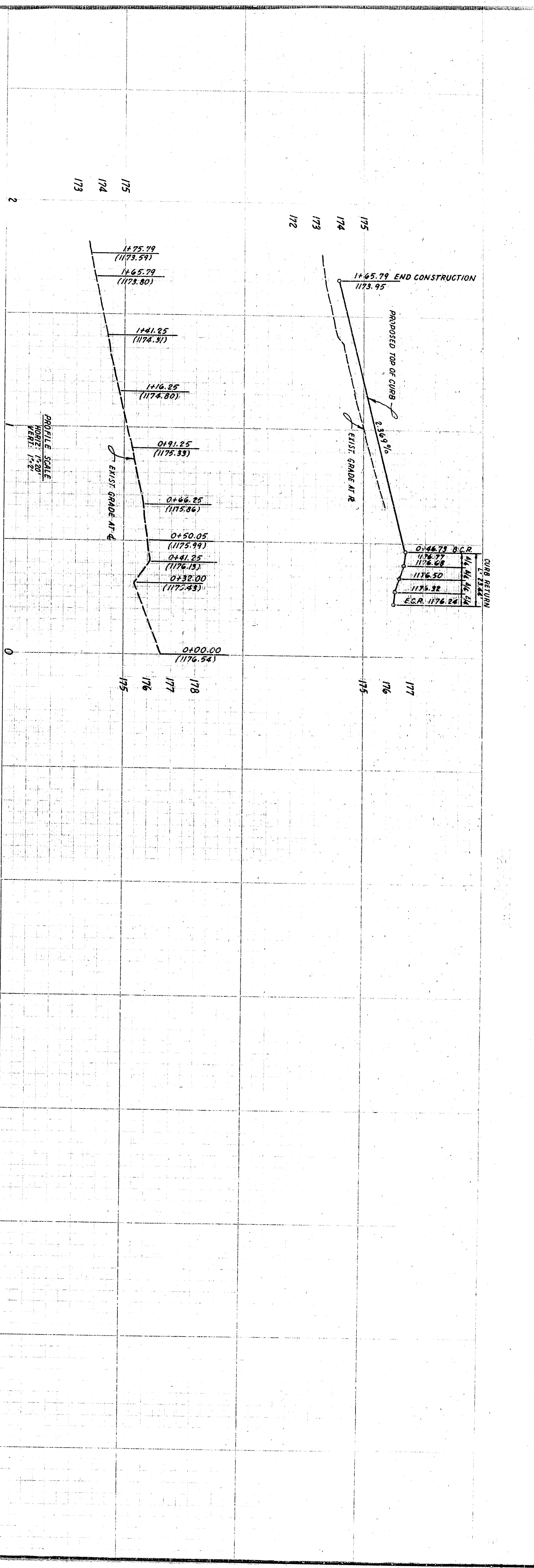
BENCH MARK
SPREW IN CURB AT THE SOUTHEAST CORNER OF HIGHLAND AVENUE AND MASSACHUSETTS AVENUE ELEV. 1175.21

DEPARTMENT OF ENGINEERING
CITY OF SAN BERNARDINO
STREET IMPROVEMENT PLAN AND PROFILE OF
SOUTHWEST CORNER OF HIGH-
LAND AND MASSACHUSETTS

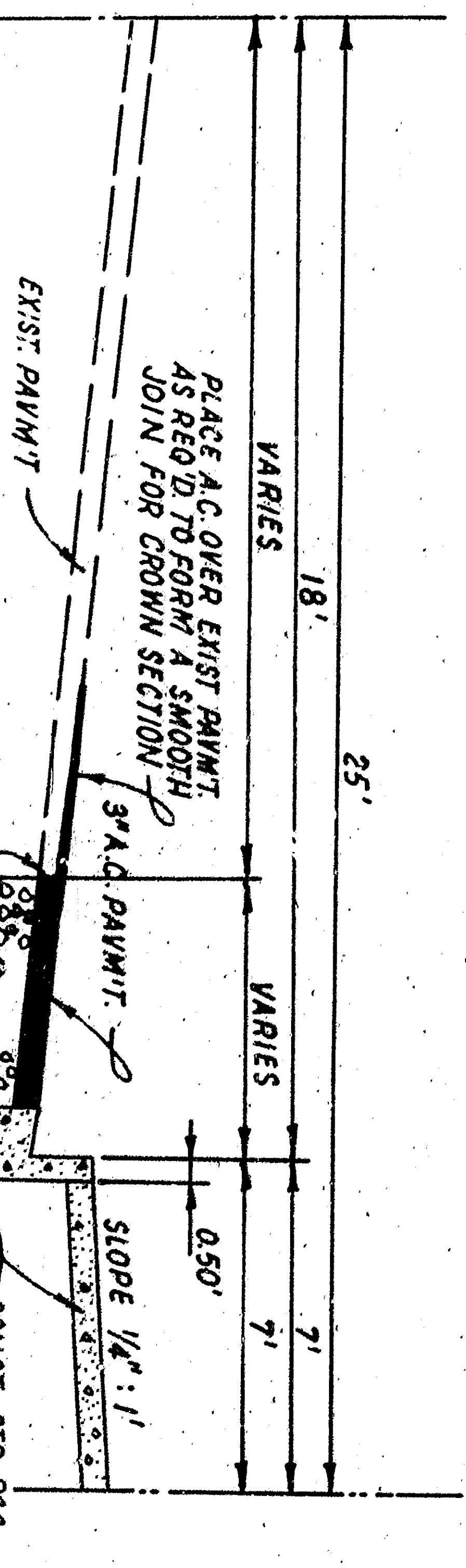
PREPARED IN THE OFFICE OF THE CITY ENGINEER, SAN BERNARDINO COUNTY, CALIFORNIA, DRAWING NO. 174-1019-10
DATE: 8-19-66
THOMAS E. SULLIVAN, REGISTERED CIVIL ENGINEER, REG. NO. 172827

SUBMITTED BY: FRI STATE ENG. CO.	REFERENCE:	DRAWING NO.:
APPROVED: [Signature]	DRAWN BY: [Signature]	3501
CHECKED BY: [Signature]	DATE: 8-19-66	SHEET 1 OF 1 SHEET

REGISTERED CIVIL ENGINEER NO. 172827



- CONSTRUCTION NOTES**
1. CONST. 4\"/>
 - 2. CONST. STD. COMM. DRIVEWAY, PER STD. 2321-A.
 - 3. CONST. RCC CURB & GUTTER, PER STD. 2321-A TYPE 'B'.
 - 4. CONST. 45\"/>
 - 5. JOIN EXIST. CONCRETE AND MATCH EXIST. ELEVATIONS.
 - 6. CONST. 3\"/>
 - 7. REMOVE EXIST. CONC. DRIVEWAYS.
 - 8. REMOVE EXIST. CONC. SIDEWALK.
 - 9. CONST. P.C. CURB PER STD. 2321-A TYPE 'A', JOIN EXIST. ELEV. WITH EXIST. CURB UNDER WALK AND DRIVEWAY 5\"/>
 - 10. DRAIN PROPOSED CATCH BASIN AS SHOWN ON G.S. PLAN.



MASSACHUSETTS AVENUE

GENERAL NOTES:

1. PRIVATE AND PUBLIC UTILITIES SHOWN HEREON ARE SUBJECT AVAILABLE RECORD DATA. THE CONTRACTOR SHALL BE RESPONSIBLE FOR LOCATING ALL LINES AFFECTING THIS WORK, AND FOR DAMAGE OR PROTECTION OF THESE LINES.
2. ALL WORK EMPLOYED ON THESE PLANS SHALL BE DONE IN CONFORMANCE WITH APPLICABLE PROVISIONS OF STANDARD SPECIFICATION, THE CITY ENGINEERING DEPT. NO. 5321 ON FILE IN THE OFFICE OF THE CITY ENGINEER.
3. ALL WORK ON HIGHLAND AVENUE SHALL CONFORM TO STATE DIVISION OF HIGHWAY'S STANDARD SPECIFICATION NO. 5321.

BENCH MARK
SPREW IN CURB AT THE SOUTHEAST CORNER OF HIGHLAND AVENUE AND MASSACHUSETTS AVENUE ELEV. 1175.21

PREPARED IN THE OFFICE OF THE CITY ENGINEER, 100 SOUTH BERNARDINO AVENUE, PALM BEACH, CALIFORNIA. PHONE NO. 734-8119/210.

THOMAS E. SULLIVAN DATE: 8-9-66 REG. 12827

DEPARTMENT OF ENGINEERING	
CITY OF SAN BERNARDINO	
STREET IMPROVEMENT PLAN AND PROFILE OF	
SOUTHWEST CORNER OF HIGH-	
LAND AND MASSACHUSETTS	
SUBMITTED BY: TRI STATE ENG. CO.	REFERENCE:
APPROVED: [Signature]	DRAWN BY: [Signature]
DATE: 8-9-66	CHECKED BY: [Signature]
REGISTERED CIVIL ENGINEER NO. 1853	DRAWING NO. 350
SHEET 1 OF 1 SHEET	